



# Elevate and Empower your Business

with the Colour Laser Range

[www.brother.ae](http://www.brother.ae)

# Empower your business, elevate eco-consciousness

Brother's colour laser printer range is designed with both usability and sustainability in mind. Featuring an ergonomic design, easily replaceable components, and rich colour output, ensuring your business enjoys a hassle-free, high-quality printing experience.



## Designed with the environment in mind

As sustainability becomes a business imperative, more companies are adopting eco-conscious hardware. This range is designed to extend product life, reduce downtime with replaceable components and easy to recycle EPS-free packaging.

## Engineered for maximum efficiency

**High-speed printing and scanning:** with scan speeds of up to **100 images per minute** and \*34% faster first print out time than previous models, our latest device delivers best-in-class scanning efficiency to support modern business workflows.

**Smarter Maintenance, Zero Downtime:** Upgrade Your Workflow with Brother's New User-Replaceable Fuser Unit & Paper Feed Kit designed to keep your business running. Tool free, technician free replacement and minimizing operational disruption.

**Built-in Eco Mode feature:** The eco mode feature adjusts fuser temperature and enables power scheduling, conserving energy and helping your business meet its sustainability goals.

**Compact and powerful:** Designed for modern workspaces, this range features a streamlined footprint that fits easily into most spaces without compromising on performance.

\*34% faster first print out time compared to previous models (HL-L8360CDW, MFC-L8690CDW, MFC-L9570CDW)



# Solutions ready

Enhance efficiency and protect sensitive information with integrated print management solutions. Brother offers a suite of device management, security and workflow solutions which can be added to devices. Helping you streamline operations and safeguard your business.

## Pro Upgrades Solutions

### Workflow solutions

**Customise your touchscreen:** With Custom UI you can tailor the touchscreen to your needs. Customise layouts, add backgrounds and icons, and create personalised workflows including 'scan-to' destinations.

**Organise documents with barcodes:** Organise documents effortlessly with barcode recognition. Barcodes are analysed and processed on the server, allowing files to be automatically routed and saved to the correct network folder.

**Print barcodes from your device:** With Brother's Barcode Print+ feature, you can easily add barcode printing to your existing Brother office printer, creating high-quality barcodes with ease.

*Disclaimer: The above solutions do not come as standard on the device and must be purchased separately. For more information, email us at [support@brother.ae](mailto:support@brother.ae)*



# Secure by design

To keep pace with the ever-evolving legislation on privacy and data security, our devices offer the latest industry-standard security features to securely protect your data.

At Brother we put print security first. All our products are 'secure as standard' using triple-layer security at a network, device and document level, with a range of robust features that means data is only ever seen by those it is meant for.

With businesses shifting towards zero trust environments, we know that security is your highest priority. The range offers enhanced data protection, backed by external security certification for added peace of mind. Every device includes a flexible suite of security features tailored to your business, making it easy to audit, control and manage your fleet.

## Security solutions

### Secure Print+

Print confidential documents securely with Brother's Secure Print+. Your sensitive documents are only printed when you are ready to collect them using a Near-field Communications enabled ID card. Only authorised staff can collect their documents and users are easily added and removed.

### Secure Print Advanced

It's common in an office to pick-up a printed document and find multiple documents left on a printer, increasing the potential of information getting into the wrong hands. The use of pull printing adds an additional level of protection to your documents.



## Device management solutions

**Remote device support:** Brother's business devices have a Remote Panel solution that enables your IT department or service provider to remotely troubleshoot device issues.

**Request help:** Request Help is a Brother service that allows IT administrators or service providers to quickly diagnose printer issues. By pressing the 'Request Help' icon on the control panel, a detailed diagnostic report is automatically generated and emailed to the designated support contact.





## The range



**FPOT**  
Less than  
9.9 Seconds

**17.6cm**  
(7.0") Colour  
Touchscreen

**2-SIDED**  
Scan up to  
100ipm

**NFC**  
Secure  
Authentication

Print or Copy up to 31ppm

2-Sided Print or Copy, up to 20 sides per minute

17.6cm (7.0") Colour display

WiFi (2.4GHz) and Gigabit ethernet

250 Sheet paper tray and dedicated 50 Sheet Multi-Purpose input tray

Auto paper low/empty detection

7,500 black, 6,500 colour page yield toners

**MFC-L8970CDW**



**FPOT**  
Less than  
9.9 Seconds

**2-SIDED**  
Scan up to  
56ipm

**NFC**  
Secure  
Authentication

Print or Copy up to 31ppm

2-Sided Print or Copy, up to 20 sides per minute

8.8cm (3.5") Colour display

WiFi (2.4GHz) and Gigabit ethernet

250 Sheet paper tray and dedicated 50 Sheet Multi-Purpose input tray

Auto paper low/empty detection

3,000 black, 1,800 colour page yield toners

**MFC-L8730CDW**



**FPOT**  
Less than  
9.9 Seconds

**SCAN**  
Up to  
28ipm

**250**  
Sheet Optional  
Paper Tray

- Print or Copy up to 31ppm
- 2-Sided Print or Copy, up to 20 sides per minute
- 8.8cm (3.5") Colour display
- WiFi (2.4GHz) and Gigabit ethernet
- 250 Sheet paper tray and dedicated 50 Sheet Multi-Purpose input tray
- Auto paper low/empty detection
- 3,000 black, 1,800 colour page yield toners

**DCP-L8630CDW**



**FPOT**  
Less than  
9.9 Seconds

**250**  
Sheet Optional  
Paper Tray

**NFC**  
Secure  
Authentication

- Print up to 31ppm
- 2-Sided Print up to 20 sides per minute
- 6.8cm (2.7") Colour display
- WiFi (2.4GHz) and Gigabit ethernet
- 250 Sheet paper tray and dedicated 50 Sheet Multi-Purpose input tray
- Auto paper low/empty detection
- 3,000 black, 1,800 colour page yield toners

**HL-L8430CDW**

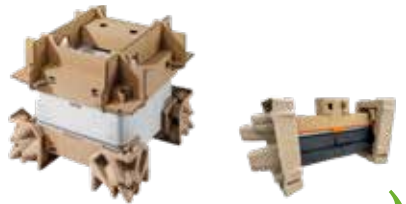




# Playing our part for Sustainability

Smarter Packaging.  
Lighter Environmental Impact.

Brother continues to advance sustainability through engineering innovation. Brother's new printer series features EPS-free, recyclable packaging engineered for reliable protection and logistics efficiency.



Stronger, Recyclable,  
and Environmentally  
Responsible packaging

## What is EPS-free Packaging?

Brother traditionally used Expanded polystyrene (EPS) to cushion products during transport. While proven effective, EPS is difficult to recycle and often ends up in landfill.

As part of Brother's sustainable design approach, EPS has been removed and replaced **with paper-based, recyclable molded pulp and cardboard made from recycled fibers** which helps reduce plastic use while maintaining strong, reliable product protection.



Designed for Product and  
Environment Protection



Designed with Customer  
Needs in Mind

Engineered with advanced design and simulation technology, this EPS-free packaging delivers reliable protection, shock absorption, and stability during transport using lightweight, recyclable materials without compromising quality.



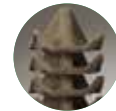
### Easier Recycling

All packaging components can be disposed through paper recycling streams.



### Cleaner Unboxing

No crumbling foam or plastic fragments and just paper-based materials.



### Easy Handling

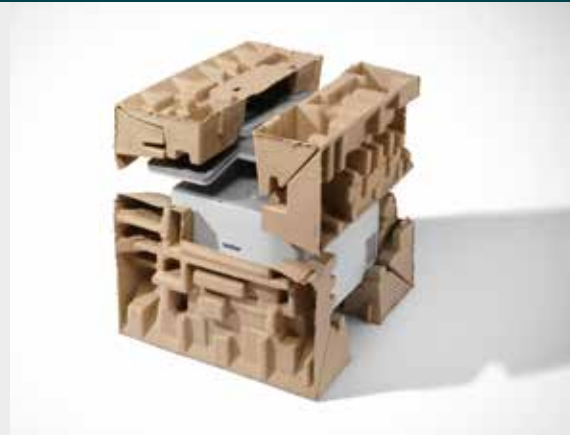
No special handling required. Saves space during transport & storage.

## Sustainable, Compact, and Lightweight Packaging

### Award-Winning Molded Pulp Packaging by Brother

The newly developed compact and lightweight molded pulp cushioning material has won a **WorldStar Award at the 2025 WorldStar Global Packaging Awards**. Recognized for its smaller, lighter design that maintains cushioning performance, **the packaging reduces CO2 emissions during production and transport**. The award follows recognition at the Japan Packaging Contest 2024.

*Disclaimer: Images shown are for illustration purposes only and may not represent the actual models.*



# Range dimensions



**HL-L8430CDW**



**DCP-L8630CDW  
MFC-L8730CDW**



**MFC-L8970CDW**

## Optional accessories

**250**  
Sheets



LT-350CL

**Get more productivity with extra paper trays**

Combine up to:

- 2 x LT-350CL
- 2 x LT-360CL
- 1 x LT-350CL and 1 x LT-360CL

DCP-L8630CDW, MFC-L8730CDW  
not compatible with LT-360CL



**520**  
Sheets

LT-360CL



## Specifications

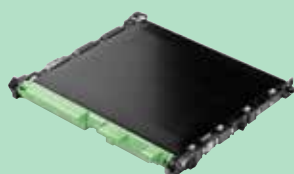
	HL-L8430CDW	DCP-L8630CDW	MFC-L8730CDW	MFC-L8970CDW
<b>General</b>				
6.8cm (2.7") Colour Touchscreen LCD	●			
8.8cm (3.5") Colour Touchscreen LCD, 48 Configurable Shortcuts		●	●	
17.6cm (7") Colour Touchscreen LCD, 64 Configurable Shortcuts, Dedicated UI				●
Memory 512MB Internal, USB 2.0 Host (Front) <sup>4</sup>	●	●	●	
Memory 1GB Internal, USB 2.0 Host (Front   Rear) <sup>4</sup> , Storage Print				●
Apple AirPrint <sup>5</sup> , Mopria, Microsoft Universal Print, Direct Print (USB host)	●	●	●	●
Integrated NFC Reader	●		●	●
Up to 5,000 pages recommended monthly print volume	●	●	●	
Up to 7,500 pages recommended monthly print volume				●
Scan to <sup>5</sup> File, Email, OCR, Image, USB flash drive, Direct Scan to PC		●	●	●
25 Network Scan Profiles, Email Server, Document Separation		●	●	●
Copy Interrupt				●
Brother Mobile Connect App, Brother Print Service Plugin <sup>5</sup> , Web Connect, Brother Apps, Email Print <sup>6</sup> , BSI (Brother Solutions Interface)	●	●	●	●
Inbox Toner <sup>2</sup> (TN665XXL) BK: Approx. 7,500 pages   CMY: Approx. 6,500 pages				●
Inbox Toner <sup>2</sup> (TN665) BK: Approx. 3,000 pages   CMY: Approx. 1,800 pages	●	●	●	
Standard Yield Toner <sup>2</sup> (TN665) BK: Approx. 3,000 pages   CMY: 1,800 pages	●	●	●	●
Super High Yield Toner <sup>2</sup> (TN665XXL) BK: Approx. 7,500 pages   CMY: 6,500 pages	●	●	●	●
Ultra High Capacity Yield Toner <sup>2</sup> (TN667) BK/C/M/Y: Approx. 10,000 pages	●	●	●	●
<b>Optional Pro Upgrade Solutions<sup>6</sup></b>				
Barcode Utility, Custom UI		●	●	●
ThinPrint Client, Remote Panel, Request Help, Order Supplies, Secure Print Advanced, Secure Print+, Barcode Print+	●	●	●	●

1. Based on ISO/IEC 24734 2. Approx declared toner yield value in accordance with ISO/IEC 19798 3. Based on ISO/IEC 24735 4. Third Party USB hubs not supported 5. Requires Brother Software, free download from the Brother Solutions Centre <http://solutions.brother.com> 6. Does not come as standard on the device and are chargeable solutions. For more information, email us. 7. Based on ISO/IEC 17991 8. Compared to Brother's L9500CDW Series

## Replaceable parts



**Drum Unit**  
DR665CL  
Approx. 50,000 pages (3 page/job)



**Belt Unit**  
BU635CL  
Approx. 100,000 pages (3 page/job)

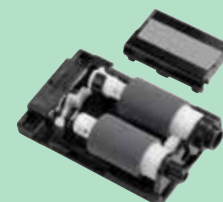


**Waste Toner Box**  
WT229CL  
Approx. 50,000 pages (5 page/job)



**Fuser Unit**  
FD-5000  
Approx. 100,000 pages (5 page/job)

**Paper Feed Kit for MP Tray**  
PF-M5000  
Approx. 50,000 pages (5 page/job)



**brother**  
at your side